

**SAMSON CREE NATION – MATRIX SOLUTIONS INC.  
PARTNERSHIP**

**ABORIGINAL CONSTRUCTION MONITORING**

**WEEKLY REPORT**

**SPREAD 2**

**OCTOBER 9<sup>TH</sup> - OCTOBER 13<sup>TH</sup>**

## **1. PURPOSE OF THIS REPORT**

The report is a weekly summary of the daily reports submitted by the Aboriginal Monitors that are working on spread two. The social and cultural findings have been tabulated with locations and mitigation measures below. A summary of the construction activities has been summarized for October 9<sup>th</sup> – October 13<sup>th</sup> 2018.

### Social and Cultural Features

| Field Observation  | # of occurrences | Description and Mitigation Measures | Mitigation Status | Further Action Required (Yes/No) |
|--|------------------|-------------------------------------|-------------------|----------------------------------|
| Traditional Use Area (hunting, fishing, gathering, trapping) | N/A              |                                     |                   |                                  |
| Rock Formations (rocks of significance, tipi rings, etc.)    | N/A              |                                     |                   |                                  |
| Artifacts  | N/A              |                                     |                   |                                  |
| Bones  | N/A              |                                     |                   |                                  |
| Potential Gravesites   | N/A              |                                     |                   |                                  |

### Environmental Features

| Field Observation              | # of occurrences | Description and Mitigation Measures | Mitigation Status | Further Action Required (Yes/No) |
|--------------------------------|------------------|-------------------------------------|-------------------|----------------------------------|
| Medicinal or Cultural Plants   | N/A              |                                     |                   |                                  |
| Aquatic Life                   | N/A              |                                     |                   |                                  |
| Animal Observations or Burrows | N/A              |                                     |                   |                                  |
| Bird Nests                     | N/A              |                                     |                   |                                  |
| Trees (Red Willow)             | N/A              |                                     |                   |                                  |

---

|                      |     |  |  |  |
|----------------------|-----|--|--|--|
| Wetlands             | Yes |  |  |  |
| Watercourse Crossing | N/A |  |  |  |

## Additional Observations and Summary of Activities or Concerns

Attended daily safety meetings and discussed daily scopes each morning with the Contractor Liaison Dean Pooyak, and/or the Senior Construction monitor Drayton Kasokeo.

Weekly activities included spot-checking km 146,147,150,152-159,170,195,197,232, 245,251-255,257-259,260,264; and shoofly: 90-93,101,121,125,148,150,153,156,160-165,168,170.

On October 9, the daily safety theme was food storage. The weather forecast was light snow. At SF 93, an excavator was being loaded on a lowboy, and the mechanic was changing the teeth of the ditcher. Dozer was levelling at km 159+400. At km 159+300, an excavator was digging the ditch, and tie in crew were welding in the ditch. The ditcher was heading east at km 158+659. A long stick excavator was cleaning rocks out of the ditch for lower in at km 158+150. Excavators were shading and backfilling at km 156+500. An excavator was being cleaned at km 158+500 (Heritage sensitive area). At km 157+500, lowering in was monitored. Coating crew were sandblasting on bore stub at km 150+000. At SF 150, the excavator was digging the bell hole in the bore bay, a second excavator was moving the spill pile, and the pile was monitored, but nothing was found. At km 259+930, crews were stripping topsoil and transition. At SF 160, three dozers were stripping and grading the ROW, the spill piles were scanned but nothing was found. At SF 162, Drayton met with Kara Wolf (Archaeologist) to monitor the stripping crew in the Native Prairie – nothing was found. The stripping crew were going to disc the ROW for the grader and dozers to work. No crews are allowed access into culturally significant areas without the presence of the Archaeologist.

October 10, the daily safety theme was three point contact when exiting and entering equipment and trucks. The weather forecast was sunny. At SF 93, the area was congested; the ditching crew were completing the mainline ditch. They were digging the bell hole for the tie-in crew. Two long stick excavators were cleaning out the area that caved in the night before. The lowering in crew was waiting for work to finish so they can set swamp bags onto the pipe and backfill. The backfill area was scanned but nothing was found. At km 157+200, the backfill crew was cleaning the spill pile that was left by the ditcher. At SF 121, hydro mulch was being sprayed for environmental purposes. At SF 124, crews were prepping pipe. At SF 125, prep crew were transitioning pipe ends for mainline and offside pipe. At SF 148, excavator was moving dirt and dozer pushing spill pile north of bore pit. At SF 156, excavator and dozer were moving piles east. At SF 162, bridge was being installed at the watercourse. Between SF 163 and 164, dozer and grader were stripping. Hydro-vac was day lighting hotlines at km 259+141. At SF 165, excavators were stripping near to a power line, and spotters were used. Equipment was crossing and flaggers were used at km 260+560.

October 11, the daily safety theme was to be aware of drivers on the highway. The weather forecast was windy. At SF 90, the excavator was shading and backfilling, and tie-in was monitored. The coating crew were sandblasting tie-in at SF 91. At SF 93, an excavator was being washed after it left the heritage sensitive area, and semi trucks

were prepping to load equipment. Lowering-in at the wetland section was noted at km 152+950 to 153+000. Pipe weights were installed at km 152+700 to 152+970. A dozer was pulling lowboy for clean up of skids at km 153+150. Excavator long stick was moving topsoil off of geotec at km 153+000. The dozer was clearing access on work side for trucks to enter at km 154+000. Crews were cleaning equipment at km 158+600. At SF 101, lowering crew was mobbing in, and crews were setting up booms. At SF 161 and 162, stripping of the Native Prairie was monitored. Julie Mushynsky, an Archaeologist, assisted Drayton with monitoring for the day. Excavators were pulling topsoil and dozers were stripping between 251+180 to 254+400. Julie identified a possible rock formation (km 254+295 to 306) and informed the crew that it should be avoided. Workers had to walk to the area to set the bridge in the correct spot so that welders can weld the bridge to the pilling. Crews marked out a 15-metre boundary for the excavator to strip to avoid possible disturbance. The area was scanned but nothing was found.

October 12, the safety theme was to be aware of your surroundings. The weather forecast was windy with rain. At SF 92, tie-in crew were digging out a plug that was left behind from the ditching crew. At SF 101, crews were working on the previously buried mainline, they started to dig the bell hole. One excavator was digging and the other was bulking. At SF 118, boring crew was working and hit a rock at the end of the bore casing and auger fighting. They changed the auger so that it would be better suited for the rocks. At SF 126, the prep crew were prepping the ends for mainline welding. The monitors spoke with Julie at the heritage site to discuss the access crew working around the site that has 6 possible Cairns. It may have been built for a memorial or a landmark. At SF 153, boring crew were onsite but got shut down due to rain. At SF 161, track hoe and dozers were moving dirt in the heritage sensitive area. At SF 162, medics were on location, crews were working on the bridge, and track hoe was moving dirt to the ramp. At SF 164, grader was grading the ROW. At SF 168, crews were cleaning equipment at the wash bay.

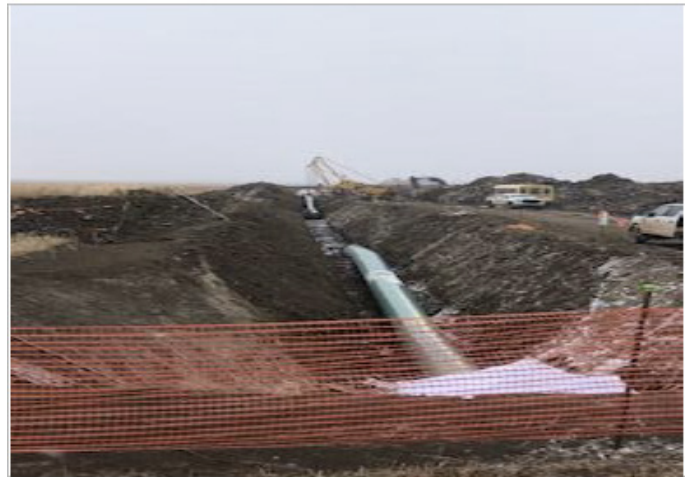
October 13, work was shut down due to rain.

The location of these features was documented and photos were collected (see below). No additional cultural or environmental features were observed within the scanned areas.

**Photos of Sites Visited & Topics Discussed This Week**



Excavator shading and cleaning – km 156+500 – Oct 9, 2018



Tie in crew welding – km 150+200 – Oct 9, 2018



Tractor discing on Native Prairie – km 254+180 – Oct 9, 2018



Transition soil being piled– km 259+680 – Oct 9, 2018



Loading equipment – Km159+300 – Oct 9, 2018



Shading pipe – km 156+550 – Oct 9, 2018



Backfilled mainline – km 154+600 – Oct 10, 2018



Backfill crew cleaning up spill pile – km 157+200 – Oct 10, 2018



Equipment moving dirt – km 257+525 - Oct 10, 2018



Pulled bore –km 233+247– Oct 10, 2018



Excavator stripping ROW near power line– km 262+362– Oct 10, 2018



Bridge being moved to watercourse– SF 162 – Oct 10, 2018





Excavators hoisting pipe weights through wetlands– SF 92 – Oct 11, 2018 Excavator shading wetland – km 152+900 - Oct 11, 2018



Installing pipe weights - km 152+900 – Oct 11, 2018

Moving topsoil back – km 153+400 – Oct 11, 2018



Native prairie being stripped – km 254+180 – Oct 11, 2018 Possible rock formations stripped by excavator – km254+306 – Oct 11, 2018



Archaeologist on Native Prairie - km 254+300 – Oct 12, 2018



Wash bay – SF 168 – Oct 12, 2018



Bridge construction - km 255+250 – Oct 12, 2018



Possible sensitive area – km 254+300 – Oct 12, 2018

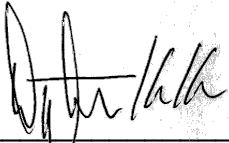


Crew digging pre-existing mainline – SF 101 – Oct 12, 2018



Digging ditch on mainline for lowering in – km 151– Oct 12, 2018

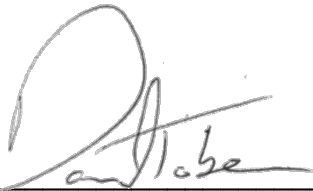
**APPROVALS**



\_\_\_\_\_  
Drayton Kasokeo  
Senior Construction Monitor

October 19, 2018

\_\_\_\_\_  
Date



\_\_\_\_\_  
Daniel Tober  
Senior Environmental Scientist

October 19, 2018

\_\_\_\_\_  
Date